



europaean
greenbelt

10th Pan-European Green Belt Conference
15th-19th October 2018 in Eisenach/Wartburg, Germany

Session 4 – Instruments to secure and improve
the functionality of the European Green Belt

The European Green Belt Factor *Dare to Connect*

Melanie Kreutz

BUND Department Green Belt
Regional Coordinator Green Belt Central Europe

Bund für
Umwelt und
Naturschutz
Deutschland



- Results of the **Research- and Development- (R+D-) Project “The European Green Belt as part of Green Infrastructure”**: Updated database on protected areas and gap analysis Central European Green Belt



Federal Ministry for the
Environment, Nature Conservation,
Building and Nuclear Safety

- Results of **1-km-Buffer-Analysis** of the Inner-German Green Belt
- Examples for the **capitalization of results**



IUCN I to VI, Natura 2000, Emerald, national parks, biosphere reserves:

- At least protected percentage in an **1 km-corridor: 47 % protected parts along EGB**
- At least protected percentage in a **50 km-corridor: 27 % protected parts along EGB**

Connectivity Analysis (case studies Central Europe and Balkan):

With decreasing distance to the border (former Iron Curtain)

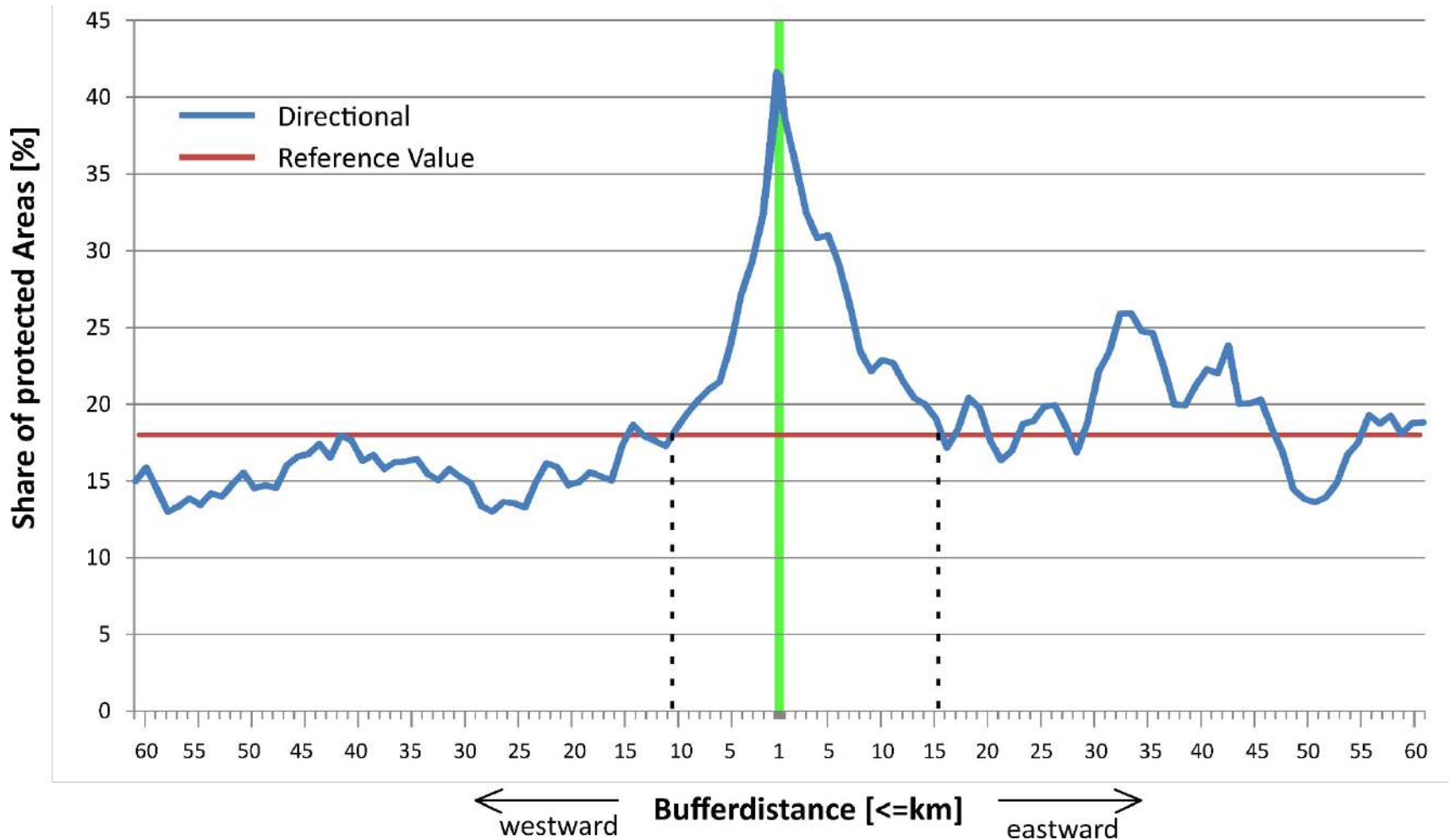
- **the percentage of protected areas is increasing and**
- **the average distance between protected areas is declining**

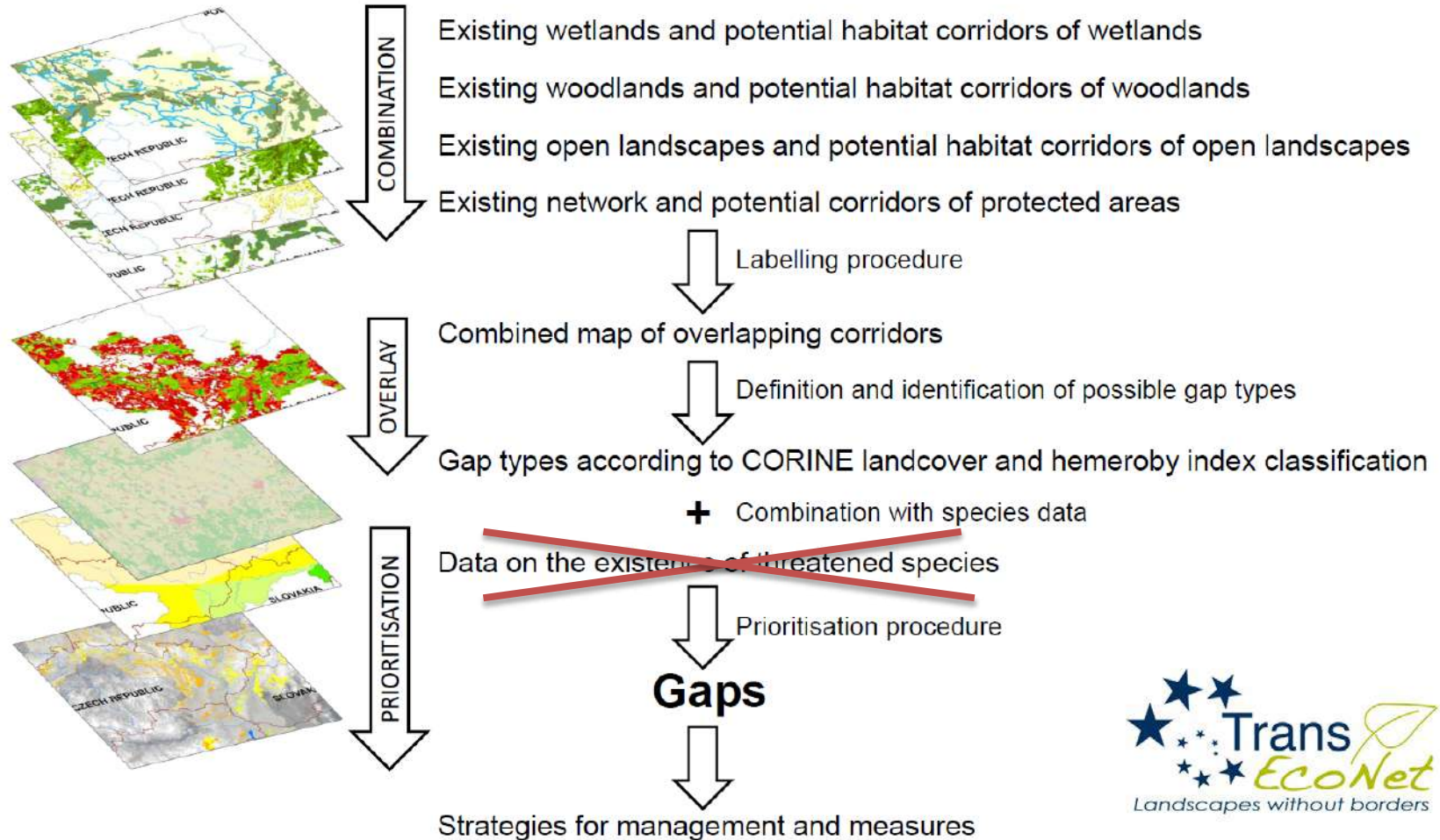


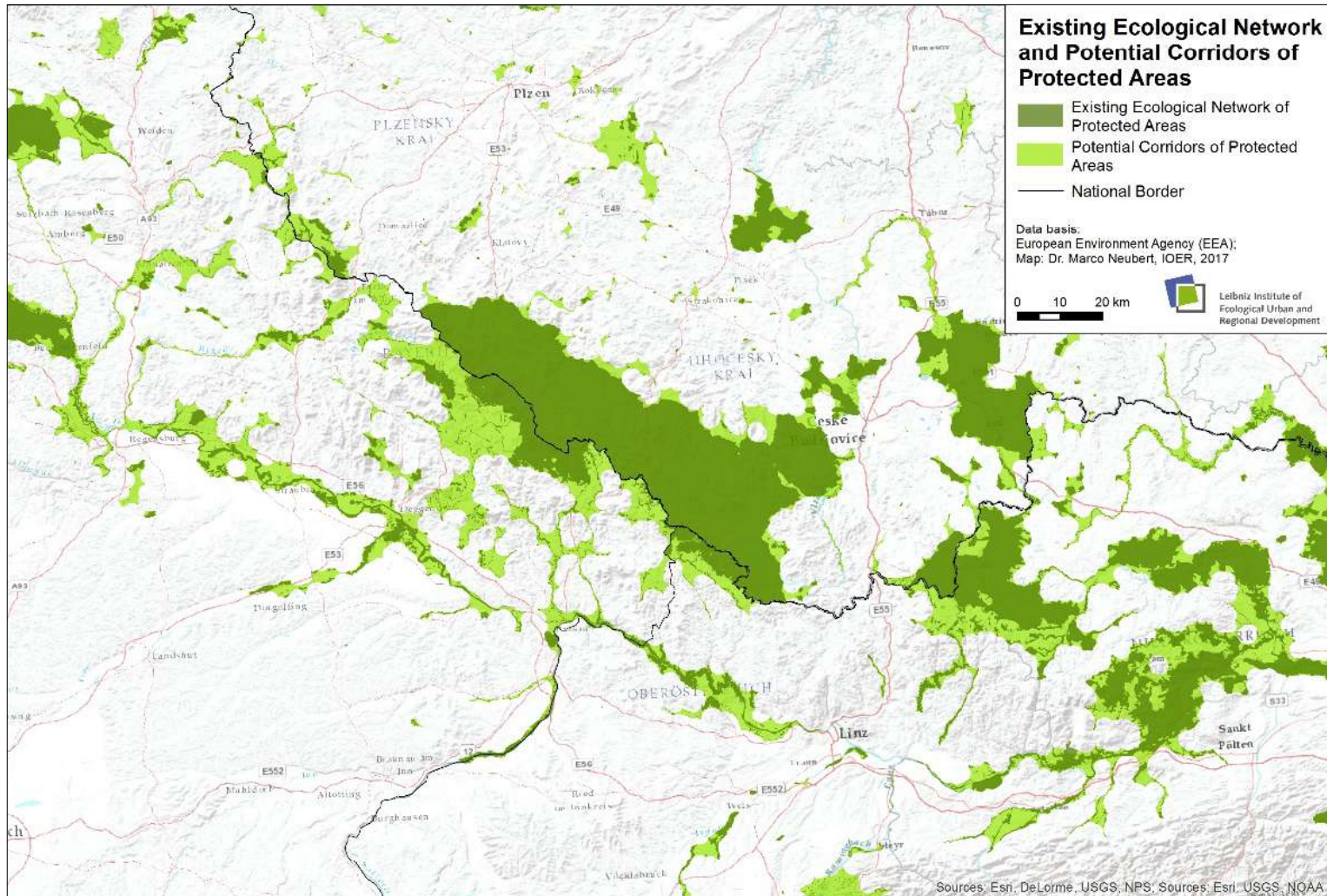
Aim: providing a more detailed picture of the relationship between the proportion of protected areas and the distance to the former Iron Curtain along the Green Belt Germany

- What is the spatial extent in which such an effect can be observed (in east and west direction)?
1. Average value of the protected land area in Germany was determined as **reference value: 17,99 % of protected area in Germany.**
 2. Buffer analysis: **60 buffers with a width of one kilometer on each side of the former Iron Curtain were created**, blended with the land area and assigned to the eastern or western side of the Green Belt.

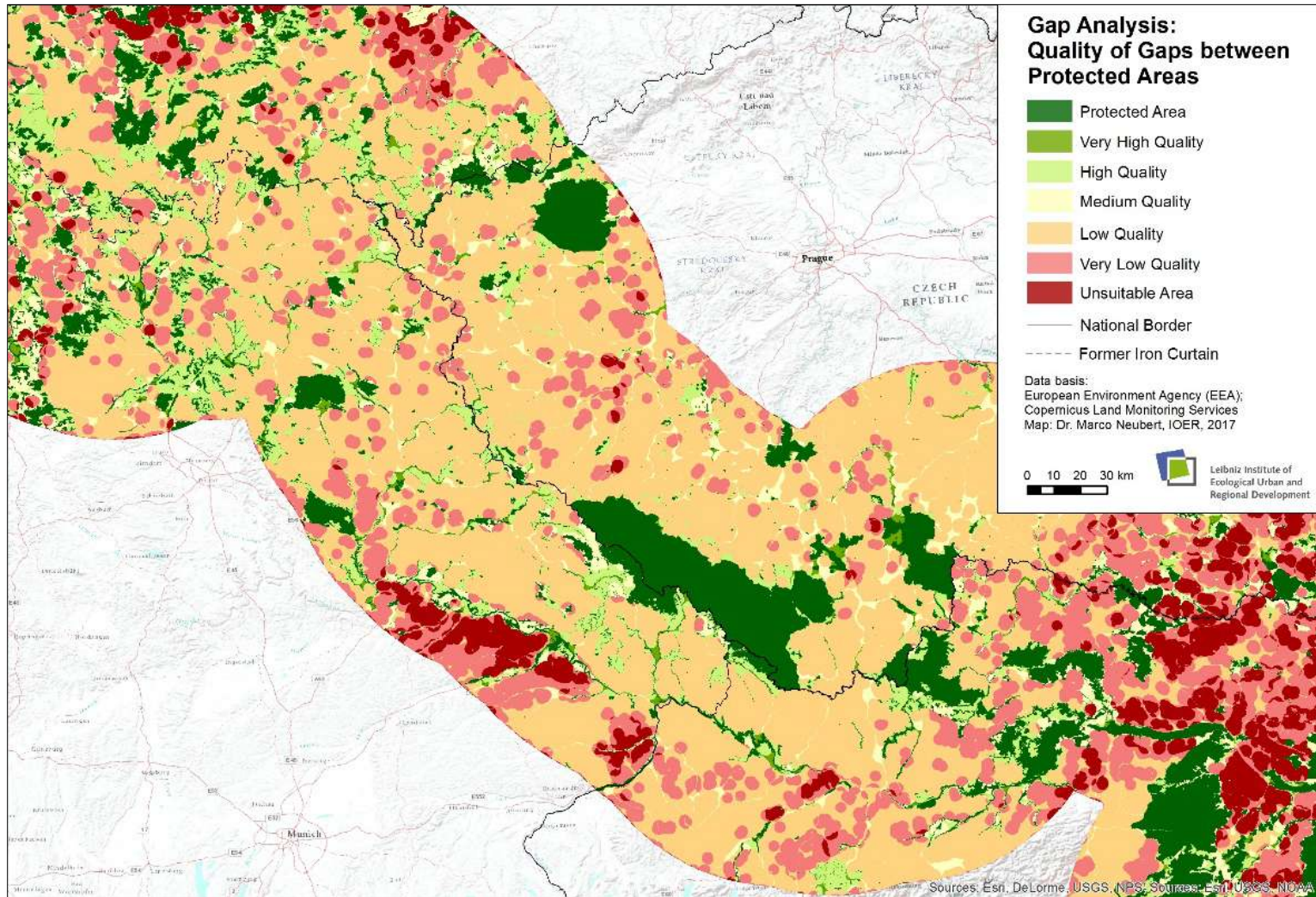
Buffer [<=km]	Percentage of protected areas (%)			Absolute values [km ²]					
	Total	East	West	Total		East		West	
				Protected area	Buffer area	Protected area	Buffer area	Protected area	Buffer area
1	40,14	38,53	41,31	923,35	2300,50	442,20	1147,54	477,73	1156,47
2	33,98	35,56	32,25	677,67	1994,46	353,07	992,77	324,60	1006,60
3	30,85	32,38	29,21	575,37	1864,95	297,91	920,08	277,46	949,98
(...)	(...)	(...)	(...)	(...)	(...)	(...)	(...)	(...)	(...)
59	17,11	18,74	15,87	231,45	1352,89	105,62	563,66	125,84	793,16
60	16,60	18,79	14,96	224,13	1350,21	105,64	562,32	118,50	791,82
SUMME	19,51	21,73	17,51	16796,65	86092,54	8640,77	39759,23	8152,81	46572,86







Example: Green Belt Germany-Czech Republic-Austria



Example: Green Belt Germany-Czech Republic-Austria

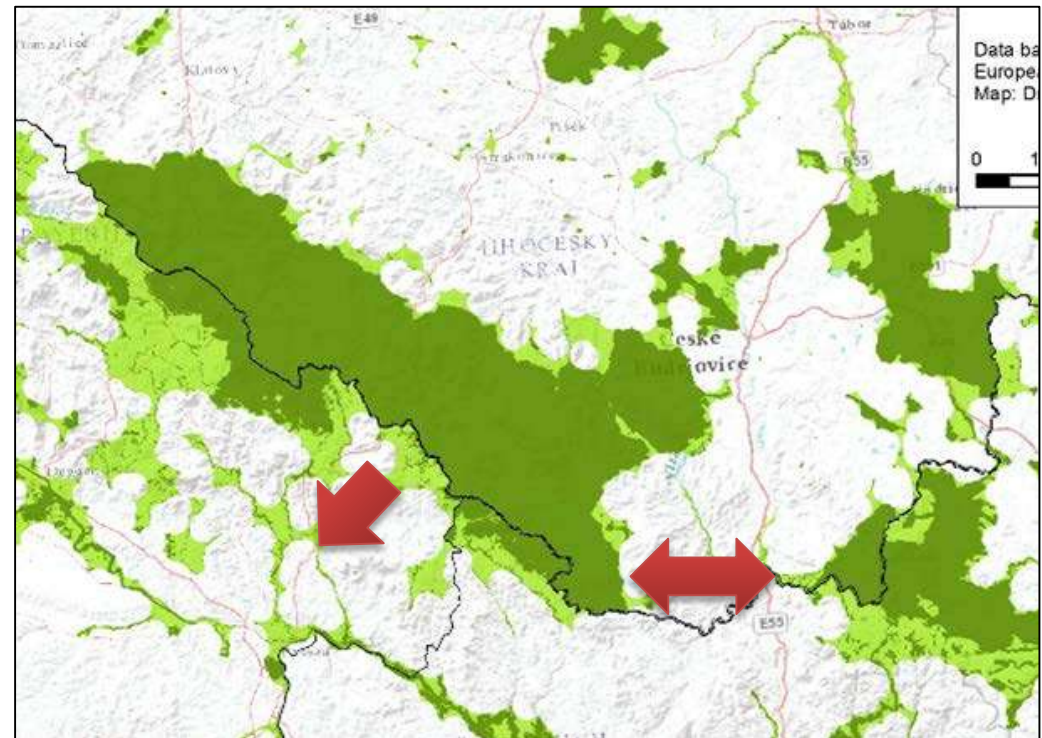
“DaRe to Connect (D2C) - Supporting Danube Region’s ecological connectivity by linking Natura 2000 areas along the Green Belt”

Runtime: June 2018 – May 2021
11 Partners from 8 countries

Detailed analysis in pilot regions

- Existing data on habitats and species
- Use of remote sensing data (Sentinel)
- Assessment of ecosystem services
- Survey on barriers

➤ Recommendations to close existing gaps and to secure existing and potential ecological corridors

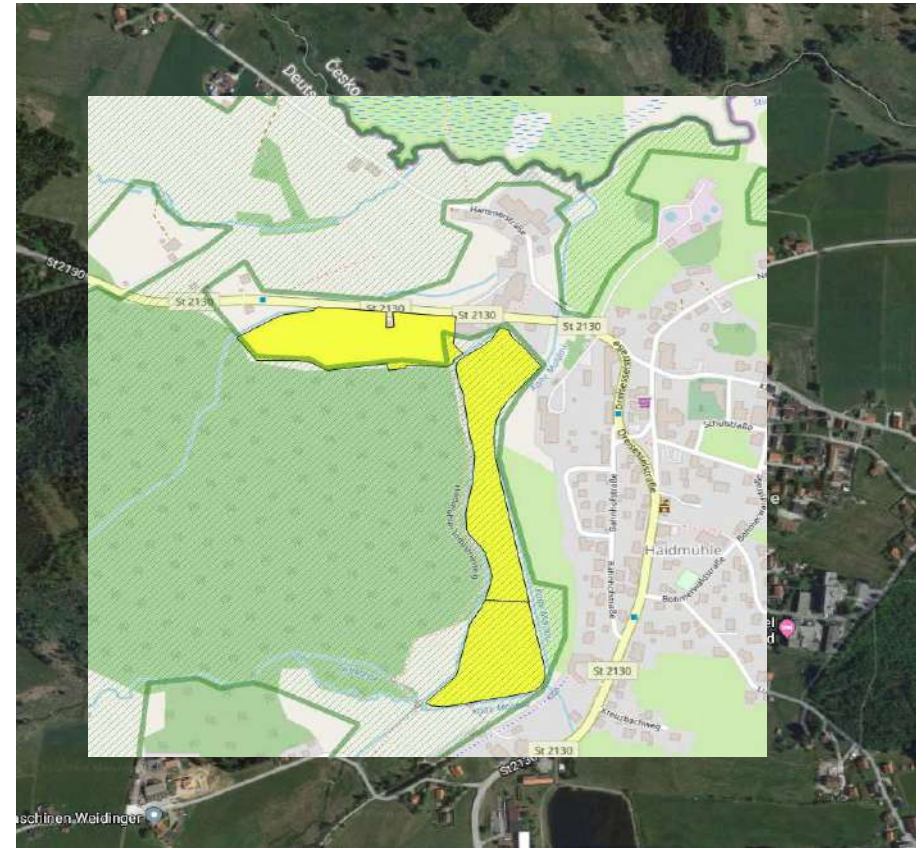


Runtime: August 2018 – December 2024

Trans-boundary project along the Green Belt
Germany-Czech Republic (Šumava and
Bavarian Forest)

On German site outside of national park
Bavarian Forest:

- Mire/wetland conservation and renaturation in neighborhood of settlements (land purchase and implementation of measures)
- **Strengthening of the Natura 2000 network** by creating buffer zones/subsequent enlargement of the protected area





european
greenbelt

Contact

BUND Department Green Belt
Regional Coordinator Green Belt Central Europe
BUND Bavaria, Hessestrasse 4
90443 Nuremberg, Germany
greenbelt@bund-naturschutz.de
Phone 0049-(0)911-5752940

Bund für
Umwelt und
Naturschutz
Deutschland

