



Feasibility study

GREEN BELT Region Upper Palatinate (Bavaria) - Czech Republic

10th European Greenbelt Conference 2018

Eisenach, 2018/10/17





■ Topics

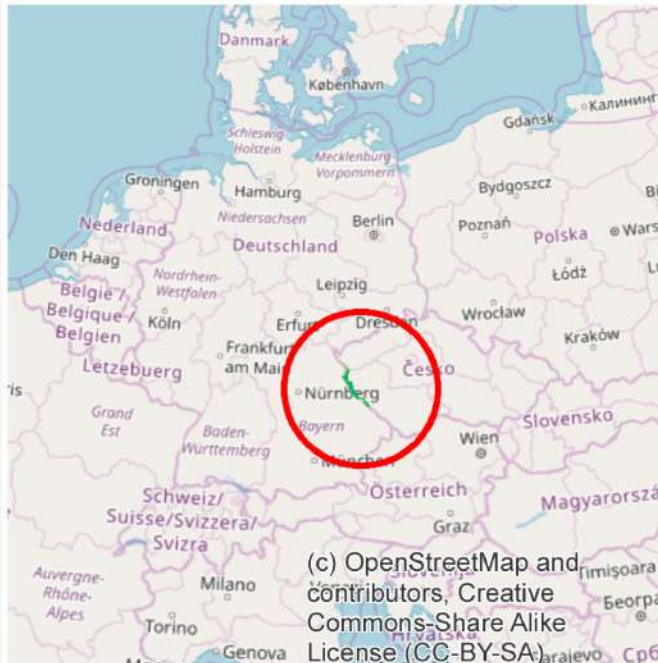
1. Introduction
2. Objectives and planned actions
3. Main results
4. Outlook on further activities



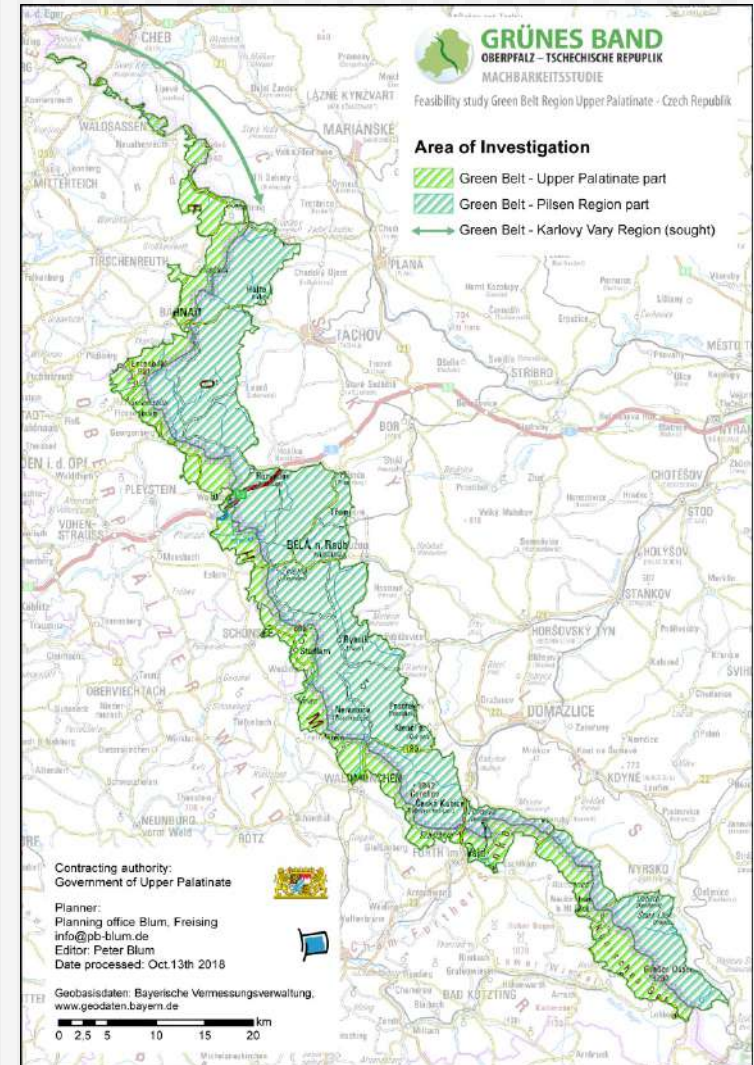


1. Introduction

■ Research area



(c) OpenStreetMap and contributors, Creative Commons-Share Alike License (CC-BY-SA)



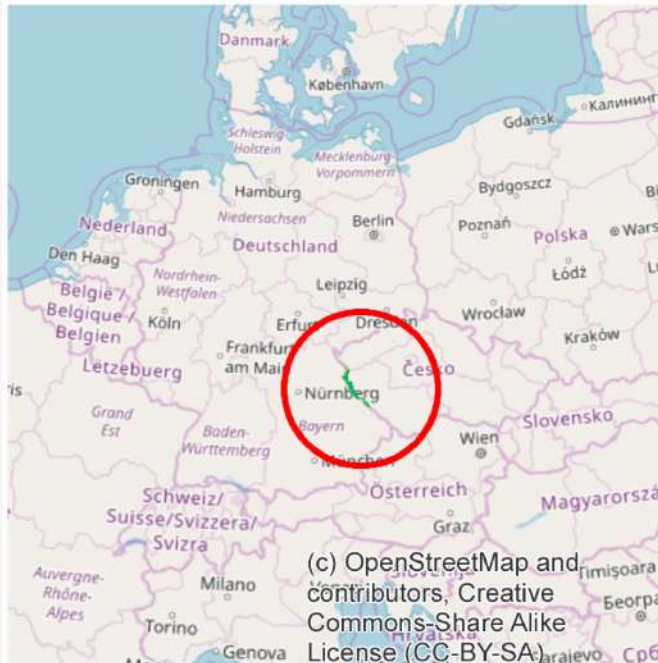




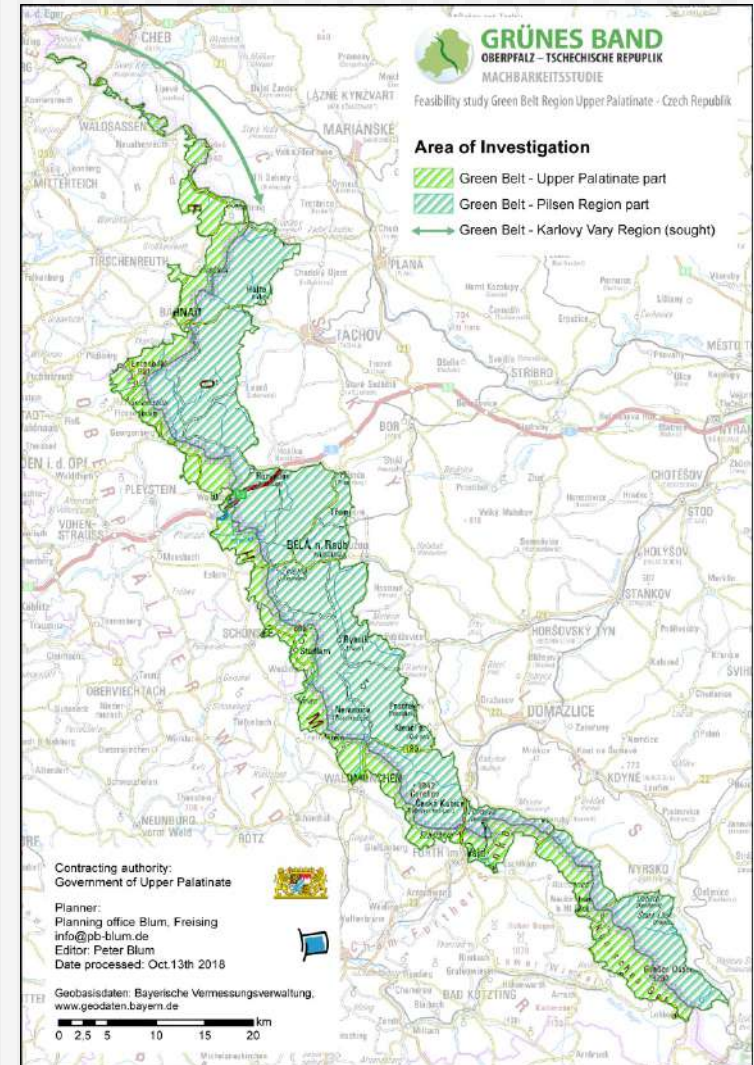


1. Introduction

■ Research area



(c) OpenStreetMap and contributors, Creative Commons-Share Alike License (CC-BY-SA)

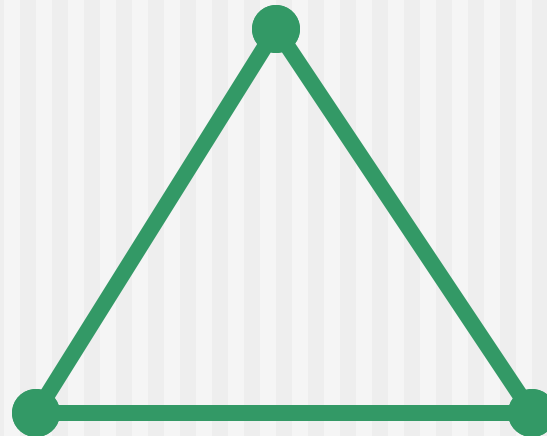




2. Objectives and planned actions

- Three thematic fields are addressed

1. Biodiversity and
habitat connectivity



2. Historic cultural
landscape

3. Nature-friendly
forms of tourism





2. Objectives and planned actions

- Dialogue with local actors
 - Municipalities
 - Nature conservation authorities and other professional authorities
 - Nature park administrations
 - Nature conservation associations
 - Representatives of agriculture and forestry
 - Universities
 - Representatives of relevant administrative bodies from the Czech Republic
 - ...





3. Results

- Identification of already started or promising activities
- Proposals for a priority implementation and realisation





3. Results

- Biodiversity

Measures to promote specific habitat types and manage indicator species, e.g.

- Habitat optimisation for Capercaillie (*Tetrao urogallus*):



Foto: © Hans-Joachim Fünfstück / piclease



Gentiana bohemica
Foto: © Andreas Zehm / piclease





3. Results

- Biodiversity

Measures to promote specific habitat types and manage indicator species, e.g.

- Restoration of former black grouse habitats (*Lyrurus tetrix*; currently without proof)



Foto: Ursula Blum 2018

Lowland fen of "Georgenberg"



Foto: Regierung der Oberpfalz





3. Results

- Biodiversity

Measures to promote specific habitat types and manage indicator species, e.g.

- Wetlands and river systems (e.g. border waters)



Foto: Ursula Blum 2018

Pfrentschwiesen



Foto: Ursula Blum 2018

Fahrbachtal





3. Results

- Biodiversity

Measures to promote specific habitat types and manage indicator species, e.g.

- Montane meadows



Foto: Regierung der Oberpfalz



Foto: © Mario Müller / piclease





3. Results

- Cultural landscape

Landscaping for awaking awareness of the border
and proposals for more extensive agriculture



Foto: Peter Blum 2018



Foto: Untere Naturschutzbehörde Tirschenreuth 2018





3. Results

- Cultural landscape,
Connecting landmarks: Castles, lookouts and
observation towers



Foto: Peter Blum 2018



Foto: Regierung d. Oberpfalz



Foto: Gabriela Rossi 2018





3. Results

- Cultural landscape

Intended Land Art project about recent settlement history (Universities of Prague/Freising-Weihenstephan); Possibility for including a student workshop and an artistic competition





3. Results

- Nature-friendly tourism based on natural and cultural values of the area, e.g.
 - Theme trails for settlement history („Lost Places”)



Left:
Bühellohe (DE)
Right:
Plöb (CR)

Foto: Regierung d. Oberpfalz



Foto: Ursula Blum 2018





3. Results

- Nature-friendly tourism
based on the natural and cultural values of the area, e.g.
 - Relicts of historical cultural landscape



Foto: Ursula Blum 2018

Ancient terraces in the forest near
Friedrichshäng and Plöß (CR)





4. Outlook

- Study will be completed and presented to the public at the beginning of 2019
- After the dialogue with local actors, priority implementation projects will be started
- Possible organisational forms, sponsorships and financing options





4. Outlook

- Possible instruments
 - State support programmes for agriculture / cultural landscape programme
 - State support programmes of nature conservation
 - Steering of prescribed measures to compensate environmental impacts
 - State support programmes of tourism
 - Share financing for EU support programmes: European Regional Development Fund (ERDF) / INTERREG / ETZ
 - EXCLUDING: protected area procedures





4. Outlook

- Supporting local activities
- Partnership with the Czech authorities and associations, e.g. ongoing cooperation with the Pilsen Region (INTERREG / ETZ Project No.194).





Thank you for the attention!

Contact details

Peter Blum
+49 (0)8161 / 676-33
peter.blum@pb-blum.de

Planungsbüro
Dipl.-Ing. P. Blum
Lindenstr. 25
85354 Freising
info@pb-blum.de

Regierung der Oberpfalz
Sachgebiet 51

Naturschutz@reg-opf.bayern.de

