

# Spatial Reference Area of the European Green Belt

European Green Belt Association

Petko Tzvetkov (BBF)

10th Pan-European Green Belt Conference

15-18 October 2018, Eisenach, Germany

## Vision for the European Green Belt Initiative

The European Green Belt, our shared **natural heritage** along the line of the former Iron Curtain, is to be conserved and restored to function as an **ecological network** connecting **high-value natural** and **cultural landscapes**, whilst respecting the economic, social and cultural needs of local communities.



## Spatial reference area of the European Green Belt

Developed

- by EuroNatur in close cooperation with the Board of the European Green Belt Association
- in the frame of the project R+D „**The European Green Belt as a part of the Green Infrastructure**“ financially supported by the German Federal Agency for Nature Conservation with funds of the German Federal Ministry for the Environment, Nature Conservation and Nuclear Safety

## The spatial reference area is a...

- **Geographical localization** of the European Green Belt
  - Identified action space, in which **activities of the Initiative are concentrated**
  - Tool to **secure support and identification** of local people/stakeholder
  - **Instrument to support the work** along the European Green Belt, e.g. implement analyses and Green Infrastructure
- The reference area may be narrowed down or widened



## Challenges

- Reflect the uniqueness of the European Green Belt, i.e. clear connection to the Iron Curtain heritage
- NOT to create a new “border”
- Coherent approach for four different regions
- Simple to understand and implement
  - Understandable without map/GIS
  - Easy to communicate
  - Available data
  - Effort/resources



## Process of developing the spatial reference area of the European Green Belt



## Process: Presentation and Discussion

- 9<sup>th</sup> Pan-European Green Belt Conference in October 2016 (Koli)
- Board meetings of the European Green Belt Association
- Coordination with Regional Coordinators
- Coordination with Board members from each region
- Balkan Green Belt Regional Conference in June 2018
- 10<sup>th</sup> Pan-European Green Belt Conference in October 2018



## Process: Identification of criteria

- Selection of **distinction criteria with focus on connectivity**
  - Reasonable to include protected areas
  - Space between protected areas also of special important for an ecological network
- The **criteria “protected areas” and “administrative units”** were identified





## Process: Identification of criteria

### Protected Areas

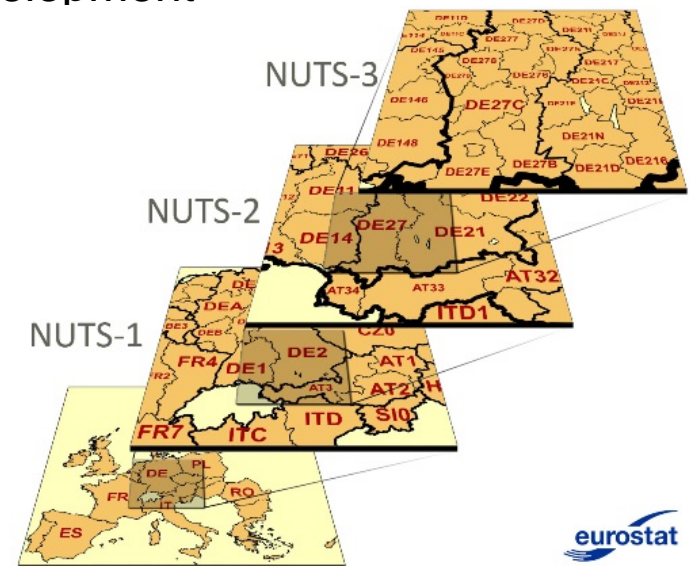
- Reference to the natural environment
- Consider functional coherent units in the landscape (important starting points / core for the development of connectivity in the landscape)



© <http://ec.europa.eu/>

### Administrative units

- Identification of decision makers, etc.
- Spatial planning
- Addressing people in concrete terms



## Process: Identification of criteria

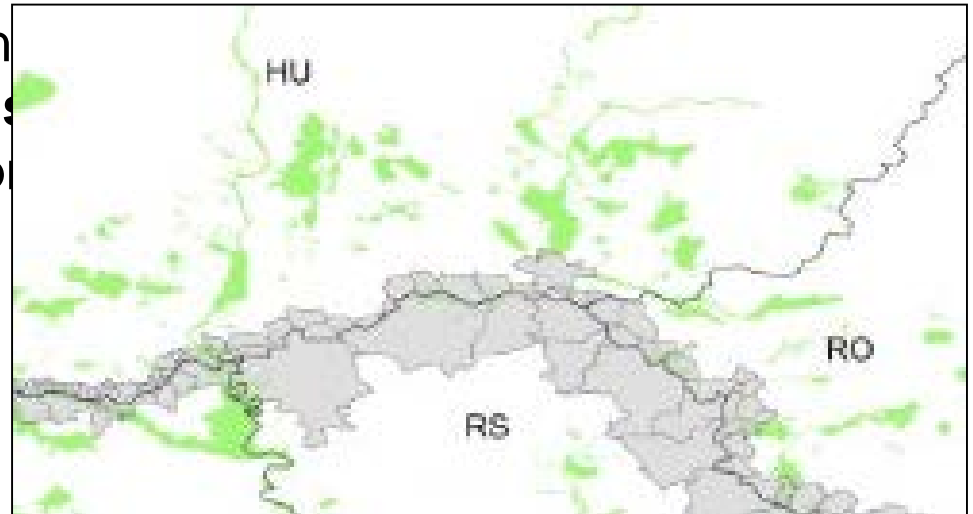
### Administrative units

- Analysis show that **Municipalities** (LAU 2) are most appropriate
- Size of units of LAU 2 (Municipalities) is quite different in the 24 countries → **necessary to select not only the unit directly adjacent to the former Iron Curtain but also subsequent units**

## Process: Identification of criteria

### Administrative units

- Analysis show that **Municipalities (LAU 2)** are most appropriate
- Size of units of LAU 2 (Municipalities) in some countries → **necessary to select units adjacent to the former Iron Curtain**



## Process: Identification of criteria

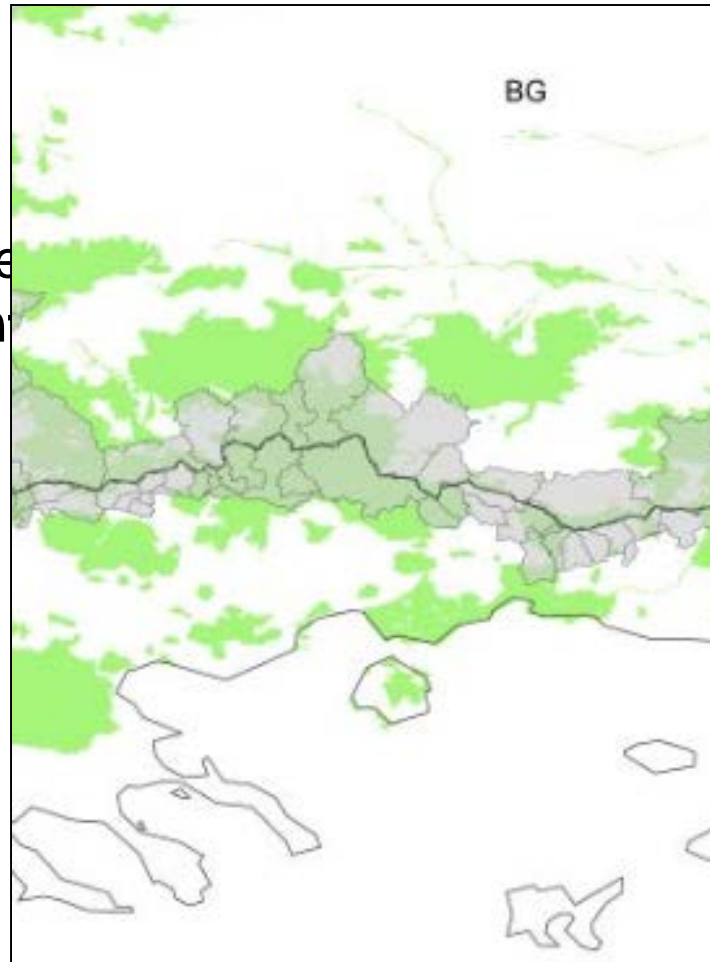
### Protected Areas

- In some countries the protected areas have a **great extent and reach far into the interior of the country** → it is necessary to define a certain limit.

## Process: Identification of criteria

### Protected Areas

- In some countries the **reach far into the in** define a certain limit.



**extent and  
necessary to**

## Process: Identification of criteria

- **A third criterion „distance to the border“ is necessary**, in order to select the protected areas and the municipalities spatially connected to EGB
- **Assessment of former border situation** made in order to identify distance for each region
  - 10 km distance to border for Baltic (land), 22,2 km (sea)
  - 5 km distance to border for Central Europe
  - 25 km distance to the border for Balkan
  - Fennoscandia not decided yet

**Result of developing  
the spatial reference area of the European Green Belt**

- the total area of **municipalities located directly** or **with their midpoint within a corridor of 10 km (Baltic, terrestrial), 20 km (Central), 50 km (Balkan) km** around the European Green Belt Line
- the total area of **protected areas** (all categories) located **with their midpoint within a corridor of 10 km (Baltic, terrestrial), 20 km (Central), 50 km (Balkan)** around the European Green Belt Line
- **Baltic Sea coastal waters** seawards: 12 nautical miles (22,2 km) from the baseline (according to the definition of territorial waters of the 1982 United Nations Convention on the Law of the Sea)
- **Other coastal waters:** until a **distance of 5 km from the coast**



# Definition of draft indicative spatial reference area of the EGB

[Map](#)

- The spatial reference area of the European Green **Belt specifies its spatial location.**
- The spatial reference area of the European Green Belt **defines the area where the activities of the initiative are concentrated.**
- The purpose of the spatial reference area is to **support the work of the European Green Belt Association and the European Green Belt Initiative**, e.g. as a base for analysis and implementation of connectivity and Green Infrastructure.
- Naturally, this reference area may be **narrowed down or widened** according to specific questions.

## **Outlook**

- Presentation and endorsement through participants Pan-European Green Belt Conference 2018
- Endorsement through General Assembly European Green Belt Association 2018
- Published as draft indicative map (e.g. website)
- Test draft indicative map of the spatial reference area of the European Green Belt in order to derive results from analysis and to gain experience on opportunities and challenges
- Review after specific time

**Questions**

**Comments**